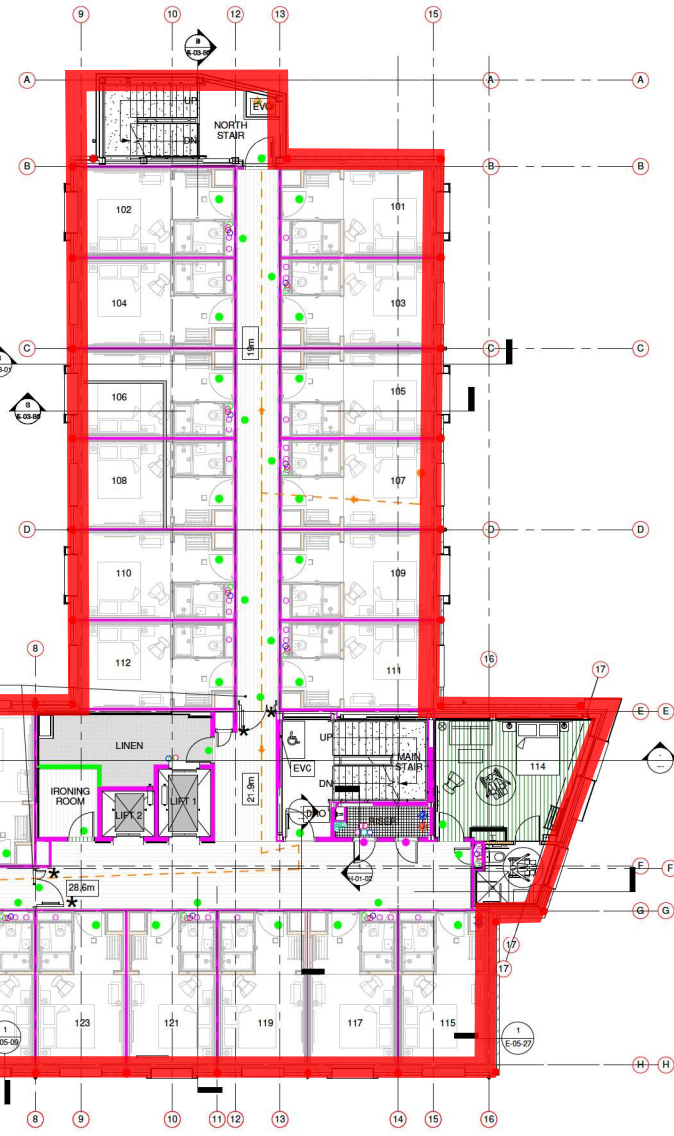
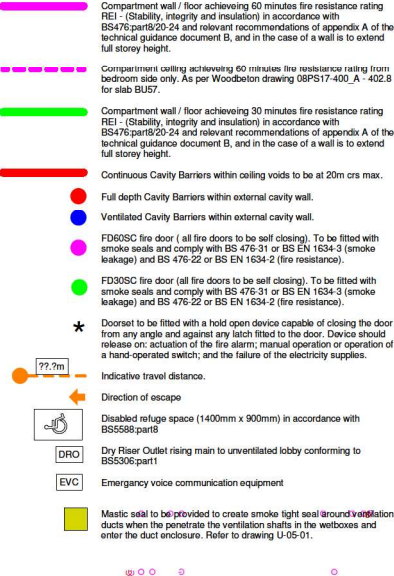


Fire Strategy Key

Notes:
 DRAWINGS TO BE READ IN CONJUNCTION WITH ALL OTHER FIRE STRATEGY DRAWINGS - 'U-SERIES'.
 All new steelwork / structure to receive intumescent paint finish to give 60mins fire rating REI
 Product performance classification for all circulation routes to be Class 0 surface spread of flame.
 Corridor doors, as indicated on plans, to be fitted with magnetic hold open devices, linked to fire alarm system. All hold open doors to have a minimum of 80mm clearance to edge of door leaf to allow for magnetic hold open hardware fixings.
 All services within risers penetrating compartment floors / walls to be fitted with fire dampers to maintain fire integrity.
 All partitions to be taken to under side of compartment floors.
 All elements of structure to achieve min 60min Fire Resistance.
 All Fire Strategy to be in line with and meet Moxy Brand Standards.
 Hold open devices to be deactivated upon: Actuation of fire alarm, any loss of power to the hold open device, separator or switch.
 Manually operated switch fitted in a position at the door. *Smoke detectors to be fitted either side of the door positioned not less than 500mm and not more than 5000mm from the door.
 All fire escape door to be fitted with escape ironmongery.



— Licensed Area

© COPYRIGHT OF CUMMING AND CO (ABERDEEN) LTD
 This drawing cannot be reproduced or used in anyway without the express written permission of the aforementioned. All design intent and content is copyright of the aforementioned.

Date	No.	Description

Drawing Status: RIBA STAGE 5 - CONSTRUCTION

alston house
6 castlehill
aberdeen
ab11 5sq

tel 01224 355800
fax 01224 350603
info@cummingandco.com
www.cummingandco.com

cummingandco

CLIENT: VASINI HOSPITALITY B.V.

PROJECT: MOXY HOTEL - YORK

CONTENT: FIRE STRATEGY - 1ST FLOOR

SCALE: As indicated @ A1 DATE: JAN 18

JOB REFERENCE DRAWING REV
17-030 U-01-02

DRAWN BY: FM CHECKED BY: PM

1 LEVEL 1 - FIRE STRATEGY PLAN
 Scale: 1 : 100